



FLANGE HEATERS

OVERVIEW

Flange immersion heaters are one of the most widely used methods of heating gases and liquids (such as water, oil, heat transfer to fluid and corrosive solutions). Designed for use in tanks and pressurized vessels, they are easy to install and maintain to provide heat for multiple processes.

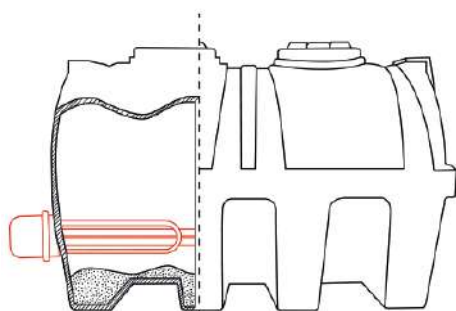
They are available in flanges of various sizes.



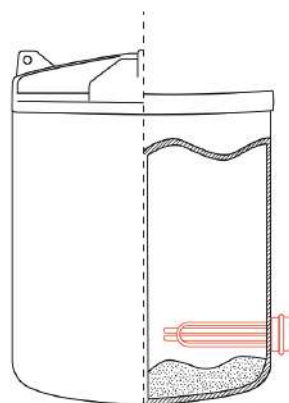
Applications:

- Copper material: Hot water storage, heating of non-corrosive solutions and antifreeze.
- Steel material: Asphalt, wax, kerosene, tar and petroleum.
- Stainless steel material: Solutions with soap or detergent materials and corrosive elements.
- Colorless material: Air, gas, corrosive solutions and saturated vapors.

Adaptations:



Flange type heater mounted on the end of a water storage tank.



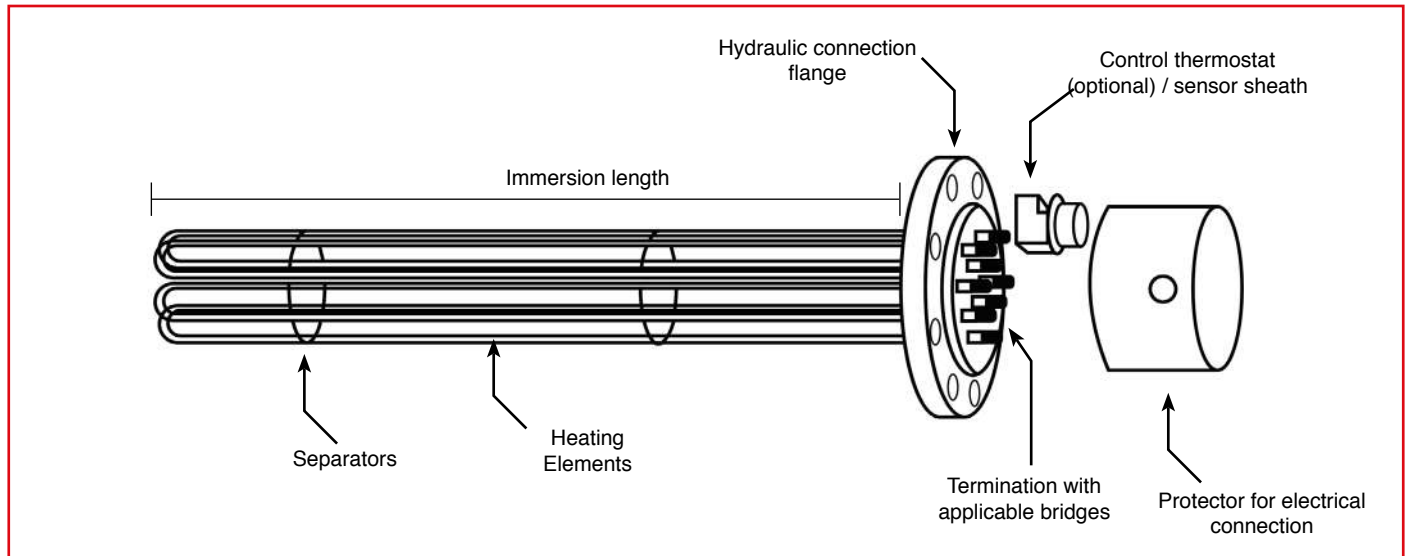
Flange type heater mounted at an angle around the bottom of the tank, allowing a free working area.

SCAN AND REVIEW OUR THEMATIC VIDEO



For technical advice, please contact your assigned salesperson.

PARTS OF A FLANGE HEATER:



Selection Guide

For the selection of the correct flange type heater it is convenient to specify various values such as power, voltage, electrical distribution, type of material, number of elements and type of fastening.

The application of the heater is influenced by the following parameters:

- ① Fluid type, specific heat, density and corrosive properties.
- ② Contaminants present in the environment.
- ③ Tank dimensions
- ④ Starting temperature / Temperature required
- ⑤ Time to reach the desired temperature

SPECIFICATIONS:

- **Voltage:** Comind Industries' Flange Type heaters are customized and supplied with voltages to customer specification.
- **Lengths:** COMIND INDUSTRIES standard flange heaters are made of elements that are silver brazed, TIG or flange welded.
- **Protection zone or cap:** Special terminal housings can be made for all types of heaters:
- Moisture resistant.
- Explosion resistant.

When ordering an explosion-proof cap, please provide:

*Class
*Division or zone
*Group
*Temperature code for unsafe locations
- **Wattage:** The heaters are custom made. They can be supplied with any wattage required.
- **Type of tube:** Incoloy®
Stainless steel 304-316-316L
Copper

SELECTION GUIDE:

Applications	Tube material	Flange Material	Watt / cm2
Clean Water	Copper	Steel	7-10 Watt/cm2
Process water	SS	Steel	5-7 Watt/cm2
Mildly corrosive solution	SS	Steel	5 Watt/cm2
Highly corrosive solution	INCOLOY®	SS	3 Watt/cm2
Demineralized or deionized water	INCOLOY®	SS	3-5 Watt/cm2
Light weight oil	Steel	Steel	2.2 Watt/cm2
Medium weight oil	Steel	Steel	3 Watt/cm2
Heavy oil	Steel	Steel	1.8 Watt/cm2
Food equipment	Copper	Brass	5-7 Watt/cm2

MAXIMUM ELEMENTS PER FLANGE:

Flange Standard ASA	Number of elements
3" 150 lb ó 300 lb	Can be manufactured in 3 elements or increased to 6 heating elements
4" 150 lb ó 300 lb	Can be manufactured in 6 elements or upgraded to 9 heating elements
5" 150 lb ó 300 lb	Can be manufactured in 6 elements or upgraded to 12 heating elements
6" 150 lb ó 300 lb	Can be manufactured in 12 elements or upgraded to 15 heating elements
8" 150 lb ó 300 lb	They can be manufactured in 18, 21, 24 or 27 elements.
10" 150 lb ó 300 lb	They can be manufactured in 27, 30, 33 or 36 elements.
12" 150 lb ó 300 lb	They can be manufactured in 36, 39, 42, 45 or 48 elements.
14" 150 lb ó 300 lb	They can be manufactured in 45, 48, 51, 54, 57 or 60 elements.



PRONTA
ENTREGA

Product assembly
Delivery in 3 working days

LINE PRODUCT

IFC Models

CLEAN WATER

GENERAL FEATURES

- Flange from 3" up to 10" ANSI
- Medium density of load
- Includes sensor sheath
- Includes electrical protection cover
- Stainless steel element 304

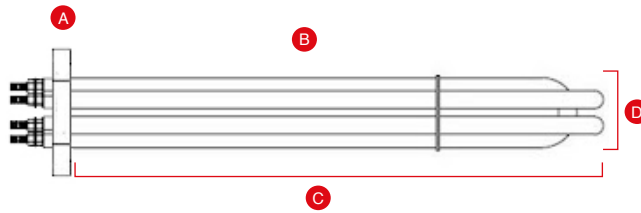


Photo Referencial

A	B					C	D	
TYPE FLANGE	MATERIAL TUBE	FLANGE MATERIAL	POWER (Kw)	VOLTS (V)	WATT/Cm2	LONG IMMERSION	NUMBER OF ELEMENTS	MODEL
FLANGE 3"	COPPER	STAINLESS STEEL 304	9	220 / 380V	8	600 mm	3	IFC11
FLANGE 3"	COPPER	STAINLESS STEEL 304	12	220 / 380V	8	600 mm	6	IFC12
FLANGE 3"	COPPER	STAINLESS STEEL 304	18	220 / 380V	8	900 mm	6	IFC13
FLANGE 4"	COPPER	STAINLESS STEEL 304	12	220 / 380V	8	800 mm	9	IFC21
FLANGE 4"	COPPER	STAINLESS STEEL 304	15	220 / 380V	8	800 mm	6	IFC22
FLANGE 4"	COPPER	STAINLESS STEEL 304	18	220 / 380V	8	800 mm	6	IFC23
FLANGE 4"	COPPER	STAINLESS STEEL 304	30	220 / 380V	8	1000 mm	9	IFC24
FLANGE 5"	COPPER	STAINLESS STEEL 304	12	220 / 380V	8	600 mm	6	IFC31
FLANGE 5"	COPPER	STAINLESS STEEL 304	15	220 / 380V	8	800 mm	6	IFC32
FLANGE 5"	COPPER	STAINLESS STEEL 304	18	220 / 380V	8	800 mm	6	IFC33
FLANGE 6"	COPPER	STAINLESS STEEL 304	36	220 / 380V	8	1000 mm	9	IFC41
FLANGE 6"	COPPER	STAINLESS STEEL 304	48	220 / 380V	8	1000 mm	12	IFC42
FLANGE 6"	COPPER	STAINLESS STEEL 304	60	220 / 380V	8	1200 mm	15	IFC43
FLANGE 8"	COPPER	STAINLESS STEEL 304	50	220 / 380V	8	800 mm	18	IFC51
FLANGE 8"	COPPER	STAINLESS STEEL 304	100	220 / 380V	8	1200 mm	21	IFC52
FLANGE 8"	COPPER	STAINLESS STEEL 304	150	220 / 380V	8	1500 mm	24	IFC53
FLANGE 10"	COPPER	STAINLESS STEEL 304	100	220 / 380V	8	1500 mm	18	IFC61
FLANGE 10"	COPPER	STAINLESS STEEL 304	145	220 / 380V	8	1800 mm	21	IFC62

LINE PRODUCT

**PRONTA
ENTREGA**

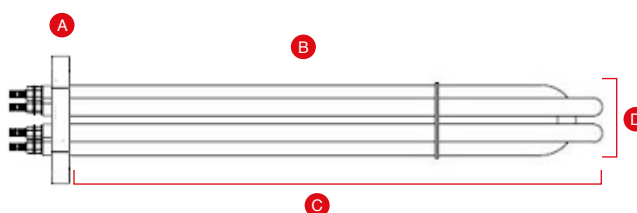
Product assembly
Delivery in 3 working days

IFSS-2 Models

PROCESS WATER

GENERAL FEATURES

- Flange from 3” up to 10” ANSI
- Medium density of load
- Includes sensor sheath
- Includes electrical protection cover
- Stainless steel element 316



A	B		C			D		
FLANGE TYPE	TUBE MATERIAL	FLANGE MATERIAL	POWER (Kw)	VOLTS (V)	WATT/Cm2	LONG IMMERSION	NUMBER OF ELEMENTS	MODEL
FLANGE 3"	STAINLESS STEEL 316L	STAINLESS STEEL 316	6	220 / 380V	5	600 mm	3	IFSS211
FLANGE 3"	STAINLESS STEEL 316L	STAINLESS STEEL 316	12	220 / 380V	5	600 mm	6	IFSS212
FLANGE 3"	STAINLESS STEEL 316L	STAINLESS STEEL 316	18	220 / 380V	5	900 mm	6	IFSS213
FLANGE 4"	STAINLESS STEEL 316L	STAINLESS STEEL 316	15	220 / 380V	5	800 mm	6	IFSS221
FLANGE 4"	STAINLESS STEEL 316L	STAINLESS STEEL 316	24	220 / 380V	5	800 mm	9	IFSS222
FLANGE 4"	STAINLESS STEEL 316L	STAINLESS STEEL 316	20	220 / 380V	5	1000 mm	6	IFSS223
FLANGE 4"	STAINLESS STEEL 316L	STAINLESS STEEL 316	36	220 / 380V	5	1200 mm	9	IFSS224
FLANGE 5"	STAINLESS STEEL 316L	STAINLESS STEEL 316	12	220 / 380V	5	600 mm	6	IFSS231
FLANGE 5"	STAINLESS STEEL 316L	STAINLESS STEEL 316	15	220 / 380V	5	800 mm	6	IFSS232
FLANGE 5"	STAINLESS STEEL 316L	STAINLESS STEEL 316	20	220 / 380V	5	1000 mm	6	IFSS233
FLANGE 6"	STAINLESS STEEL 316L	STAINLESS STEEL 316	18	220 / 380V	5	600 mm	9	IFSS241
FLANGE 6"	STAINLESS STEEL 316L	STAINLESS STEEL 316	30	220 / 380V	5	800 mm	12	IFSS242
FLANGE 6"	STAINLESS STEEL 316L	STAINLESS STEEL 316	60	220 / 380V	5	1200 mm	15	IFSS243
FLANGE 8"	STAINLESS STEEL 316L	STAINLESS STEEL 316	45	220 / 380V	5	800 mm	18	IFSS251
FLANGE 8"	STAINLESS STEEL 316L	STAINLESS STEEL 316	87	220 / 380V	5	1200 mm	21	IFSS252
FLANGE 8"	STAINLESS STEEL 316L	STAINLESS STEEL 316	120	220 / 380V	5	1500 mm	24	IFSS253
FLANGE 10"	STAINLESS STEEL 316L	STAINLESS STEEL 316	87	220 / 380V	5	1500 mm	18	IFSS261
FLANGE 10"	STAINLESS STEEL 316L	STAINLESS STEEL 316	130	220 / 380V	5	1800 mm	21	IFSS262
FLANGE 10"	STAINLESS STEEL 316L	STAINLESS STEEL 316	150	220 / 380V	5	1800 mm	24	IFSS263

PRONTA ENTREGA

Product assembly
Delivery in 3 working days

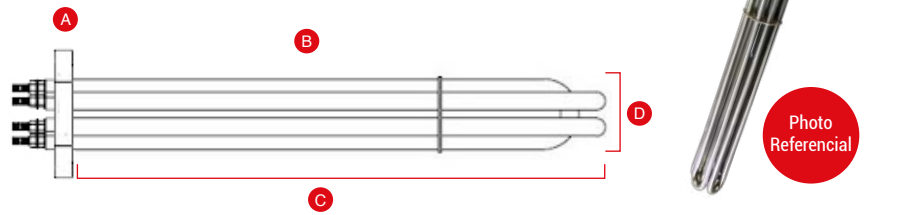
LINE PRODUCT

IFSS-1 Models

MEDIUM INTENSITY OIL

GENERAL FEATURES

- Flange from 3" up to 10" ANSI
- Medium density of load
- Includes sensor sheath
- Includes electrical protection cover
- Stainless steel element 304



A	B					C	D	
FLANGE TYPE	TUBE MATERIAL	FLANGE MATERIAL	POWER (Kw)	VOLTS (V)	WATT/Cm2	LONG IMMERSION	NUMBER OF ELEMENTS	MODEL
FLANGE 3"	Stainless steel 304L	Stainless steel 304	2.5	220 / 380V	2.2	600 mm	3	IFSS111
FLANGE 3"	Stainless steel 304L	Stainless steel 304	5	220 / 380V	2.2	600 mm	6	IFSS112
FLANGE 3"	Stainless steel 304L	Stainless steel 304	8	220 / 380V	2.2	900 mm	6	IFSS113
FLANGE 4"	Stainless steel 304L	Stainless steel 304	11	220 / 380V	2.2	800 mm	9	IFSS121
FLANGE 4"	Stainless steel 304L	Stainless steel 304	7	220 / 380V	2.2	800 mm	6	IFSS122
FLANGE 4"	Stainless steel 304L	Stainless steel 304	12	220 / 380V	2.2	1000 mm	9	IFSS123
FLANGE 5"	Stainless steel 304L	Stainless steel 304	5	220 / 380V	2.2	600 mm	6	IFSS124
FLANGE 5"	Stainless steel 304L	Stainless steel 304	7	220 / 380V	2.2	800 mm	6	IFSS131
FLANGE 6"	Stainless steel 304L	Stainless steel 304	12	220 / 380V	2.2	1000 mm	9	IFSS132
FLANGE 6"	Stainless steel 304L	Stainless steel 304	18	220 / 380V	2.2	1000 mm	12	IFSS133
FLANGE 6"	Stainless steel 304L	Stainless steel 304	27	220 / 380V	2.2	1200 mm	15	IFSS141
FLANGE 8"	Stainless steel 304L	Stainless steel 304	20	220 / 380V	2.2	800 mm	18	IFSS142
FLANGE 8"	Stainless steel 304L	Stainless steel 304	38	220 / 380V	2.2	1200 mm	21	IFSS143
FLANGE 8"	Stainless steel 304L	Stainless steel 304	55	220 / 380V	2.2	1500 mm	24	IFSS151
FLANGE 10"	Stainless steel 304L	Stainless steel 304	40	220 / 380V	2.2	1500 mm	18	IFSS152
FLANGE 10"	Stainless steel 304L	Stainless steel 304	57	220 / 380V	2.2	1800 mm	21	IFSS153
FLANGE 10"	Stainless steel 304L	Stainless steel 305	66	220 / 380V	2.2	1800 mm	24	IFSS161

LINE PRODUCT

PRONTA ENTREGA

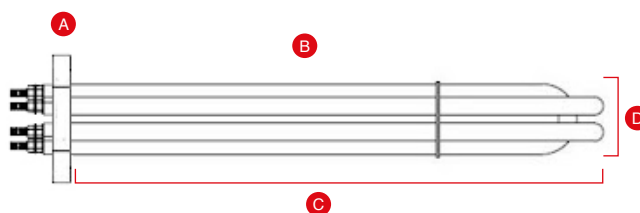
Product assembly
Delivery in 3 working days

IFY Models

CORROSIVE SOLUTIONS

CARACTERÍSTICAS GENERALES

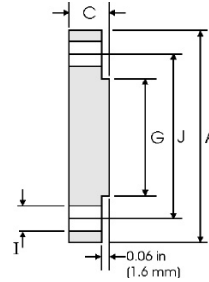
- Flange from 3" up to 10" ANSI
- Medium density of load
- Includes sensor sheath
- Includes electrical protection cover
- Stainless steel element 304



A	B					C	D	
FLANGE TYPE	TUBE MATERIAL	FLANGE MATERIAL	POWER (Kw)	VOLTS (V)	WATT/Cm2	LONG IMMERSION	NUMBER OF ELEMENTS	MODEL
FLANGE 3"	INCOLOY	Stainless steel 304	5	220 / 380V	4	600 mm	3	IFY11
FLANGE 3"	INCOLOY	Stainless steel 304	10	220 / 380V	4	600 mm	6	IFY12
FLANGE 3"	INCOLOY	Stainless steel 304	15	220 / 380V	4	900 mm	6	IFY13
FLANGE 4"	INCOLOY	Stainless steel 304	12	220 / 380V	4	800 mm	6	IFY21
FLANGE 4"	INCOLOY	Stainless steel 304	15	220 / 380V	4	800 mm	9	IFY22
FLANGE 4"	INCOLOY	Stainless steel 304	30	220 / 380V	4	1000 mm	12	IFY23
FLANGE 5"	INCOLOY	Stainless steel 304	10	220 / 380V	4	600 mm	6	IFY31
FLANGE 5"	INCOLOY	Stainless steel 304	15	220 / 380V	4	800 mm	6	IFY32
FLANGE 5"	INCOLOY	Stainless steel 304	20	220 / 380V	4	1000 mm	6	IFY33
FLANGE 6"	INCOLOY	Stainless steel 304	25	220 / 380V	4	1000 mm	9	IFY41
FLANGE 6"	INCOLOY	Stainless steel 304	32	220 / 380V	4	1000 mm	12	IFY42
FLANGE 6"	INCOLOY	Stainless steel 304	50	220 / 380V	4	1200 mm	15	IFY43
FLANGE 8"	INCOLOY	Stainless steel 304	40	220 / 380V	4	800 mm	18	IFY51
FLANGE 8"	INCOLOY	Stainless steel 304	70	220 / 380V	4	1200 mm	21	IFY52
FLANGE 8"	INCOLOY	Stainless steel 304	100	220 / 380V	4	1500 mm	24	IFY53
FLANGE 10"	INCOLOY	Stainless steel 304	75	220 / 380V	4	1500 mm	18	IFY61
FLANGE 10"	INCOLOY	Stainless steel 304	100	220 / 380V	4	1800 mm	21	IFY62
FLANGE 10"	INCOLOY	Stainless steel 304	120	220 / 380V	4	1800 mm	24	IFY63

TECHNICAL INFORMATION

DIMENSIONS FOR BLIND FLANGE BOREHOLES ANSI 150 LBS / B16.5



Nominal Diameter	Tube	Flange Data		High Face	Drilling Data			Weight
	Outside Diameter	A	C	G	H	I	J	Kg / Pieza
		Total Diameter	Flange thickness min	Face Diameter	Numbers of Holes	Diameter Screw hole	Diameter of bolt hole circle	
	in mm	in mm	in mm	in mm		in mm	in mm	
1/2	0.840	3.500	0.440	1.380	4	0.620	2.380	0.42
	21.30	88.90	11.20	35.10		15.70	60.45	
3/4	1.050	3.880	0.500	1.690	4	0.620	2.750	0.61
	26.70	98.60	12.70	42.90		15.70	69.85	
1	1.315	4.250	0.560	2.000	4	0.620	3.120	0.86
	33.40	108.0	14.20	50.80		15.70	79.25	
1 1/4	1.660	4.620	0.620	2.500	4	0.620	3.500	1.17
	42.20	117.3	15.70	63.50		15.70	88.90	
1 1/2	1.900	5.000	0.690	2.880	4	0.620	3.880	1.53
	48.30	127.0	17.50	73.15		15.70	98.60	
2	2.375	6.000	0.750	3.620	4	0.750	4.750	2.42
	60.30	152.4	19.10	91.90		19.10	120.7	
2 1/2	2.875	7.000	0.880	4.120	4	0.750	5.500	3.94
	73.00	177.8	22.40	104.6		19.10	139.7	
3	3.500	7.500	0.940	5.000	4	0.750	6.000	4.93
	88.90	190.5	23.90	127.0		19.10	152.4	
3 1/2	4.000	8.500	0.940	5.500	8	0.750	7.000	6.17
	101.6	215.9	23.90	139.7		19.10	177.8	
4	4.500	9.000	0.940	6.190	8	0.750	7.500	7.00
	114.3	228.6	23.90	157.2		19.10	190.5	
5	5.563	10.00	0.940	7.310	8	0.880	8.500	8.63
	141.3	254.0	23.90	185.7		22.40	215.9	
6	6.625	11.00	1.000	8.500	8	0.880	9.500	11.3
	168.3	279.4	25.40	215.9		22.40	241.3	
8	8.625	13.50	1.120	10.62	8	0.880	11.75	19.6
	219.1	342.9	28.40	269.7		22.40	298.5	
10	10.75	16.00	1.190	12.75	12	1.000	14.25	28.8
	273.0	406.4	30.20	323.9		25.40	362.0	
12	12.75	19.00	1.250	15.00	12	1.000	17.00	43.2
	323.8	482.6	31.75	381.0		25.40	431.8	
14	14.00	21.00	1.380	16.25	12	1.120	18.75	58.1
	355.6	533.4	35.10	412.8		28.40	476.3	
16	16.00	23.50	1.440	18.50	16	1.120	21.25	76.0
	406.4	596.9	36.60	469.9		28.40	539.8	
18	18.00	25.00	1.560	21.00	16	1.250	22.75	93.7
	457.2	635.0	39.60	533.4		31.75	577.9	
20	20.00	27.50	1.690	23.00	20	1.250	25.00	122
	508.0	698.5	42.90	584.2		31.75	635.0	
24	24.00	32.00	1.880	27.25	20	1.380	29.50	185
	609.6	812.8	47.80	692.2		35.10	749.3	

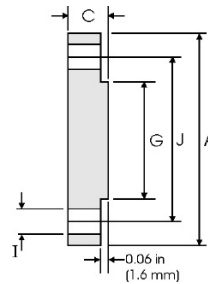
Notes

- Weights are based on manufacturers' data and are approximate.
- Flat face flanges can be supplied with full thickness, C, or with the raised face removed (the latter is not standard).

TECHNICAL DATA

DIMENSIONS FOR BLIND FLANGE BOREHOLES

ANSI 300 LBS / B16.5



Nominal Diameter	Tube	Flange Data		High Face	Drilling Data			Weight
	Outside Diameter	A	C	G	H	I	J	Kg / Pieza
	Pulgadas mm	Total Diameter Pulgadas mm	Flange thickness min Pulgadas mm	Face Diameter Pulgadas mm	Numbers of Holes	Diameter Screw hole Pulgadas mm	Diameter of bolt hole circle Pulgadas mm	
1/2	0.840 21.30	3.750 95.20	0.560 14.20	1.380 35.10	4	0.620 15.70	2.620 66.55	0.64
3/4	1.050 26.70	4.620 117.3	0.620 15.70	1.690 42.90	4	0.750 19.00	3.250 82.50	1.11
1	1.315 33.40	4.880 123.9	0.690 17.50	2.000 50.80	4	0.750 19.00	3.500 88.90	1.39
1 1/4	1.660 42.20	5.250 133.3	0.750 19.00	2.500 63.50	4	0.750 19.00	3.880 98.50	1.79
1 1/2	1.900 48.30	6.120 155.4	0.810 20.60	2.880 73.15	4	0.880 22.3	4.500 114.3	2.66
2	2.375 60.30	6.500 165.1	0.880 22.30	3.620 91.90	8	0.750 19.10	5.000 127.0	3.18
2 1/2	2.875 73.00	7.500 190.5	1.000 25.40	4.120 104.6	8	0.880 22.30	5.880 149.3	4.85
3	3.500 88.90	8.250 209.5	1.120 28.40	5.000 127.0	8	0.880 22.30	6.620 168.1	6.81
3 1/2	4.000 101.6	9.000 228.6	1.190 30.20	5.500 139.7	8	0.880 22.30	7.250 184.1	8.71
4	4.500 114.3	10.00 254.0	1.250 31.70	6.190 157.2	8	0.880 22.30	7.800 200.1	11.5
5	5.563 141.3	11.00 279.4	1.380 35.00	7.310 185.7	8	0.880 22.30	9.250 234.9	15.6
6	6.625 168.3	12.50 317.5	1.440 36.50	8.500 215.9	12	0.880 22.30	10.62 269.7	20.9
8	8.625 219.1	15.00 381.0	1.620 41.10	10.62 269.7	12	1.000 25.40	13.00 330.2	34.3
10	10.75 273.0	17.50 444.5	1.880 47.70	12.75 323.9	16	1.120 28.40	15.25 387.3	53.3
12	12.75 323.8	20.50 520.7	2.000 50.80	15.00 381.0	16	1.250 31.70	17.75 450.8	78.8
14	14.00 355.6	23.00 584.2	2.120 53.80	16.25 412.8	20	1.250 31.70	20.25 514.3	105
16	16.00 406.4	25.50 647.7	2.250 57.15	18.50 469.9	20	1.380 35.00	22.50 571.5	137
18	18.00 457.2	28.00 711.2	2.380 60.45	21.00 533.4	24	1.380 35.00	24.75 628.6	175
20	20.00 508.0	30.50 774.7	2.500 63.50	23.00 584.2	24	1.380 35.00	27.00 685.8	221
24	24.00 609.6	36.00 914.4	2.750 69.85	27.25 692.2	24	1.620 41.10	32.00 812.8	339

Notes

- Weights are based on manufacturers' data and are approximate.
- Flat-faced flanges can be furnished with full thickness, C, or with the raised face removed (the latter is not standard).

ORDER YOUR FLANGE HEATER

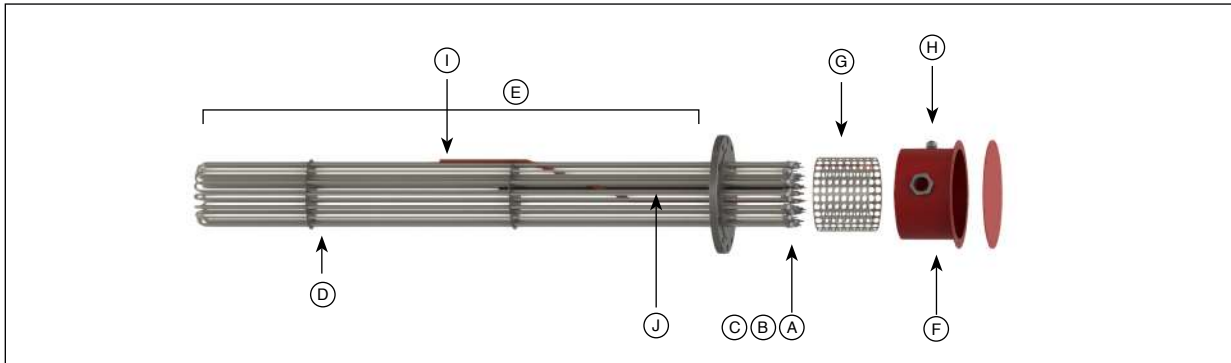
Pág. 1



Customer name

Reference:

Date:



NOTE: Drawing is for illustrative purposes only.

Operating Conditions		6. "D" Heating element sheath material:	
1. Application (specify):		304L Steel	316L Steel
		Copper	Incoloy
		Titanium	Other
		7. "E" Immersion length: mm	
2. Material to heat (specify):		8. "F" Terminal enclosure	
3. Operating temperature (specify): °C		General Purpose	Explosion proof
4. Operating pressure (specify):		9. "G" Dissipator collar	
5. Indoor Outdoor		100 mm	150 mm Other
6. Hazardous area environment		10. "H" Integral thermostat	
Class:	Division:	Group:	
7. Ambient temperature: °C		0-50°C	0-120°C 0-300°C Other
Heater Specifications (check all that apply)		11. Thermostat location:	
1. Ranking: Volts: Phase: KW:		Internal adjustment (Inside electrical protection box)	External adjustment (Electrical protection box cover) None
2. Number of electrical circuits		12. "I" Safety sensor	
Standard	kw/circuits	Other	Type J Type K PT 100
3. "A" Flange size		None Single sheath	
2"	5"	10"	
3"	6"	Other	
4"	8"		
4. "B" Flange material		13. "J" Process sensor	
304L Steel	316L Steel	Type J Type K PT 100	
Titanium	Incoloy	Other	
5. "C" Flange rating:		14. Other special features:	
Class 150	Class 300	Other	
		15. Model number:	



POWER AND CONTROL PANEL

Comind has a team of engineers and technicians specialized in the design and manufacture of boards for various uses, among which we can highlight:

- Power and lighting distribution boards.
- Motor control panels.
- Control panels.
- Soft partition boards and frequency inverters.
- LV load distribution centers.
- Manufactured under IEC or NEMA standards.
- Design voltage: up to 1000VAC.
- Operating voltage: up to 600VAC.
- Short-circuit levels according to requirements.
- Developments according to your technical specifications.

CHARACTERISTICS

- They can be self-supported and wall-mounted.
- Design voltages up to 1000VAC, operating voltages up to 600VAC.
- RAL 7032 paint finish or color according to your requirements.
- Possibility of optional accessories according to your needs.
- The location of the internal equipment is made in such a way as to provide the greatest possible ease of installation and maintenance; as well as to provide the greatest possible safety for operators and installations and to provide a high degree of continuity of service.
- All metallic parts shall be connected to a grounding bar securely bolted to the switchgear structure.
- Manufacturing and Testing Standards: IEC - NEMA / ANSI / IEEE

ACCESSORIES

- Lifting ears
- Socket (only in self-supporting panels)
- Ground rod with holes for connection of ground wires
- Equipment identification signs

OTHER OPTIONAL EQUIPMENT AND ACCESSORIES

- Heating resistor and/or fans with adjustable thermostat.
- Resistive loads. - Protection relays, measuring instruments, LV equipment.
- Voltage and current transformers for measurement and protection.
- Electric controls for switches - Starters for asynchronous motors - Data transmission systems - Key interlocks.





CUSTOM MANUFACTURING



VISIT OUR WEBSITE



BRANCHES IN CHILE

ANTOFAGASTA

+55 2246 090
+56 9 820 91 434

ANTOFAGASTA@COMIND.CL

VALPARAISO

+56 9 7211 6964

VALPARAISO@COMIND.CL

OFICINA CENTRAL

LANIN 1637 / CONCHALI
SANTIAGO DE CHILE

+ 56 224766200

CONTACTO@COMIND.CL

CONCEPCIÓN

+41 2 732 255

CONCEPCION@COMIND.CL



LATAM ATTENTION

+56982091437

INFO@COMINDINDUSTRIES.COM

GAMEN

www.gamen.cl

ingproyectos@gamen.cl

Teléfono: 75 2 381886

INDUMATE

Ventas@indumate.cl

https://indumate.cl/

Teléfono: (75) 238 1886

SUPERBIDON

ventas@superbidon.cl

www.superbidon.cl

UNITED STATES

https://www.comindindustries.com

info@comindindustries.com

PERÚ

https://www.comind.pe

ventas@comind.pe

BRAZIL

http://www.grupocomind.com.br

ventas@grupocomind.com.br

BOLIVIA

http://www.tritecbolivia.com

lapaz@tritecbolivia.com

Authorized Distributors

